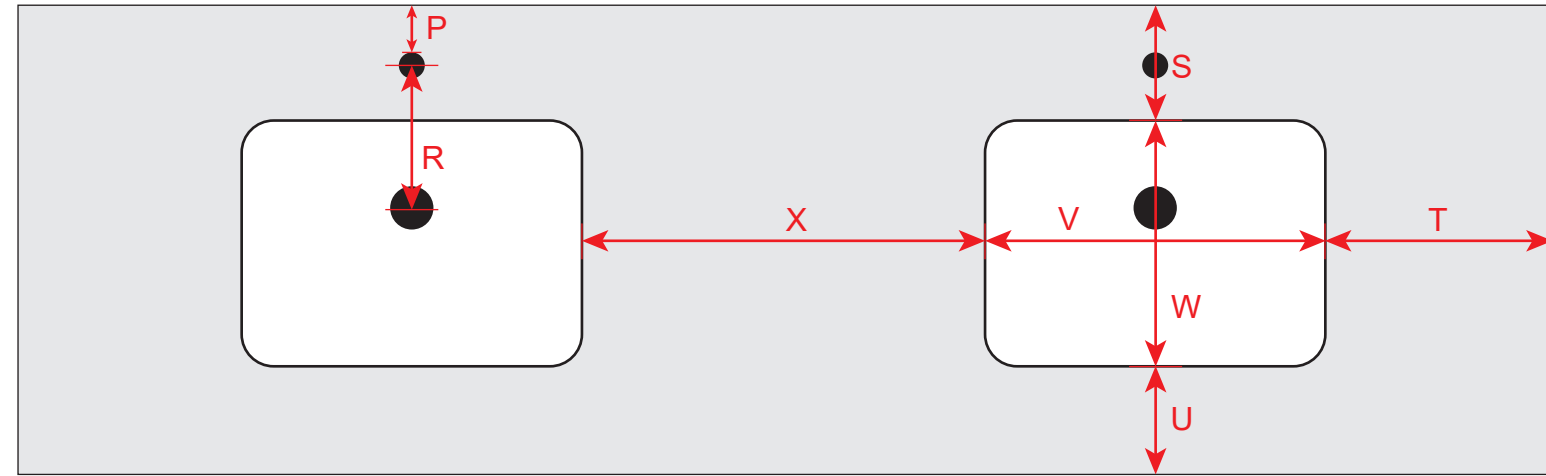


**All Dims Measured to the Nearest 0.1"**



- A** : Overall Width = 60.0" / 152.4cm
- B** : Overall Depth = 22.0" / 55.9cm
- C** : Counter Height = 34.0" / 86.4cm
- D** : Overall Height w/ Backsplash = 38.0" / 96.5cm
- E** : Cabinet Width = 59.7" / 151.7cm
- F** : Backsplash Width = 59.8" / 152.0cm
- G** : Plumbing Cutout Height = 12" / 30.5cm
- H** : Plumbing Cutout Width = 12" / 30.5cm
- I** : Edge of Cabinet to Edge of Cutout = 5.7" / 14.4cm
- J** : Floor to Bottom of Cutout = 13.6" / 34.5cm
- K** : Drawer Height :  
**K1** = 4.5" / 11.5cm   **K2** = 6.5" / 16.5cm   **K3** = 13" / 33.0cm
- L** : Drawer Width = 11.8" / 30.0cm
- M** : Door Height = 19.7" / 50.0cm
- N** : Door Width = 10.2" / 26.0cm
- O** : Toe Kick Height = 2.0" / 5.0cm
- P** : Rear Edge of Counter to Rear Edge of Faucet Hole = 2.3" / 5.84cm
- R** : Centerline of Faucet Hole to Drain Hole = 5.8" / 14.7cm
- S** : Rear Edge of Counter to Rear Edge of Sink = 5.4" / 13.7cm
- T** : Edge of Counter to Edge of Sink = 4.5" / 11.5cm
- U** : Front Edge of Counter to Front Edge of Sink = 5.0" / 12.7cm
- V** : Sink Width = 17.0" / 43.2cm
- W** : Sink Depth Front/Back = 11.8" / 30.0cm
- X** : Distance between Sinks = 16.9" / 43.0cm

